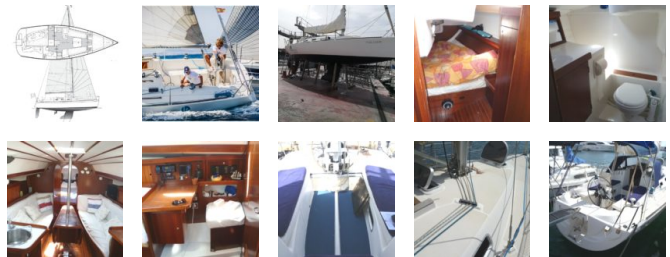


## Ro 330 - 38.500 €



### Description

The RO 330 is a modern cruiser, with very good sailing performance and surprising comfort for its length. A regatta hull with a family cruising vocation, an XXL cockpit with a very good access swimming platform, a 2-cabin version, running rig lead aft to cockpit, new electronics, new North Sails and an excellent general condition are some features that could attract your attention. The RO 330 is moored in Mallorca and available for your visit.

### Main Information

<b>Make:</b> Ronautica	<b>Model:</b> Ro 330	<b>Length:</b> 9,60
<b>Flag:</b> Española	<b>Engine Power:</b> 30	<b>Engine:</b> Volvo Penta MD2030
<b>Material:</b> GFK	<b>Displacement:</b> 3800	<b>Ref:</b> MB20366

### Dimensions

<b>Beam:</b> 3,21	<b>Displacement:</b> 3800	<b>Hull Length:</b> 9,47
-------------------	---------------------------	--------------------------

### Layout

<b>Cabins:</b> 2	<b>Heads:</b> 1	<b>Galley</b>
<b>Saloon</b>	<b>Chart table</b>	<b>Berths:</b> 1
<b>Berths in saloon</b>		

### Engine - Plumbing - Power supply

<b>Engine make:</b> Volvo Penta MD2030	<b>Number of engines:</b> 1	<b>Power per engine:</b> 30
<b>Number of cylinders:</b> 3	<b>Cruising speed:</b> 6,5	<b>Folding propeller</b>
<b>Wheel</b>	<b>Fuel capacity:</b> 80	<b>Water capacity:</b> 150
<b>Holding tank</b>	<b>Electric pressurized water system</b>	<b>Number of showers:</b> 2
<b>Shower in deck</b>	<b>Manual bilge pump</b>	<b>Electric bilge pump</b>
<b>Number of batteries:</b> 3	<b>Shore power</b>	<b>Battery charger</b>

**Voltmeter**

**Ammeter**

### Electronics

**Compass**

**Echo sounder**

**Speed/Log**

**Wind**

**GPS chart plotter**

**VHF radio with DSC**

**Autopilot**

### Rigging - Sails

**Number of masts: 1**

**Spreader line: 2**

**Backstay adjuster**

**Main**

**Spinnaker**

**Self-tailing winch**

**Spinnaker pool**

### Miscellaneous equipment

**Sun awning**

**Bimini**

**Spray hood**

**Marine WC**

**Gas stove**

**Oven**

**Electric Fridge**

**Shower: 1**

*Whilst every care has been taken in the preparation of these particulars, there correctness is not guaranteed. The particulars are intended only as a guide and they do not constitute a term of any contract. A prospective buyer is strongly advised to check the particulars and where appropriate, at his own expense to employ a qualified marine surveyor to carry out a survey and to have an engine trial conducted.*