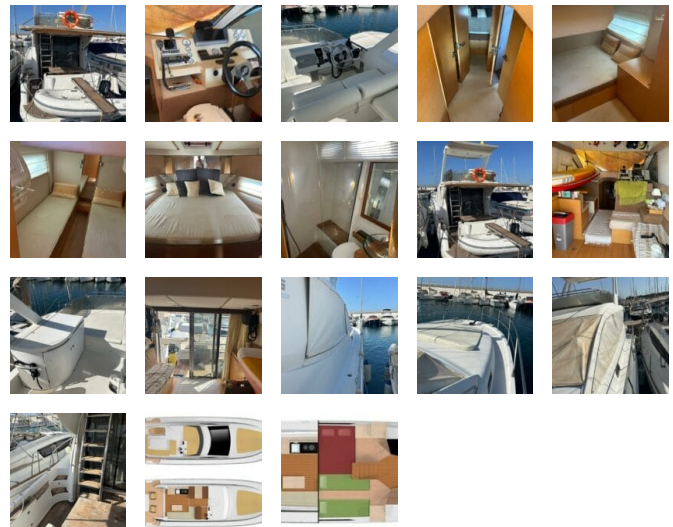


Starfisher ST 45 - 469,000 €



Description

The Starfisher ST 45 is a modern motor boat with fly bridge that offers a lot of comfort for its length. Three cabins, two toilets, galley, fly bridge, cockpit, XL bathing platform, hydraulic gangway, powerful Volvo Penta engines with IPS and joystick are some features that will catch your attention.

The Starfisher ST 45 is in very good general condition, moored in Mallorca and available for viewing.

Main Information

Make: Starfisher	Model: ST 45	Length: 13,70
Year: 2010	Flag: Spanish	Engine Power: 750
Engine: Volvo Penta	Material: GRP	Ref: MB10556

Dimensions

LOA: 13,90	Beam: 3,98	Length on Registry: 11,99
-------------------	-------------------	----------------------------------

Layout

Cabins: 3	Heads: 2	Galley
Saloon	Berths: 6	

Engine - Plumbing - Power supply

Engine make: Volvo Penta	Engine model: D6-375 IPS500	Engine type: Inboard
Fuel type: Diesel	Number of engines: 2	Power per engine: 375
Number of cylinders: 6	IPS	Engine hours: 410
Cruising speed: 22	Electronic command	Joystick
Hydraulic trim tabs	Wheel	Fuel capacity: 1300
Water capacity: 400	Holding tank	Electric pressurized water

Number of showers: 3	Electric bilge pump	system
Shore power	Battery charger	Boiler
Ammeter		Voltmeter

Electronics

Compass	GPS chart plotter	VHF radio with DSC
Multifunction screen	Autopilot	

Miscellaneous equipment

Air conditioning	Hydraulic gangway	Bow thrusters
Electric windlass	Anchor with chain	Bimini
Electric marine WC	Bathing platform	Flybridge
Electric stove	Twin sink	Electric Fridge
Freezer		

Whilst every care has been taken in the preparation of these particulars, their correctness is not guaranteed. The particulars are intended only as a guide and they do not constitute a term of any contract. A prospective buyer is strongly advised to check the particulars and where appropriate, at his own expense to employ a qualified marine surveyor to carry out a survey and to have an engine trial conducted.











