

## Bénéteau Idylle 880

6.000 €

### Description

€6,000 - Opportunity for refit project. Boat without engine, needs complete renovation, sold as is, paperwork in order (registered in Spain). The BÉNÉTEAU IDYLLE 880 model is a sturdy and comfortable cruiser that offers excellent sailing performance and great comfort. Designed by André Bénéteau himself, it is a 'my sailor' boat. The BÉNÉTEAU IDYLLE 880 is moored in Mallorca and available for viewing.



### General Information

Year:	1983	Engine:	No engine
Length:	8,45	Power:	No
Flag:	Spanish	Reference:	MB20478
Material:	GRP	Location:	Mallorca

### Dimensions

LOA:	8,80	Waterline Length:	7,30
Beam:	2,98	Displacement:	3.350
Draft:	1,25	Ballast:	950
Hull Length:	8,45		

### Distribution

Cabins:	2	Salon	
Kitchen		Bathrooms:	1
Berths:	5	Salon Berths	
Chart Table			

### Engine - Plumbing - Electricity

Engine Type:	Inboard	Fuel Type:	Diesel
--------------	---------	------------	--------

### Rigging - Sails

- Main
- Jib
- Number of Masts: 1

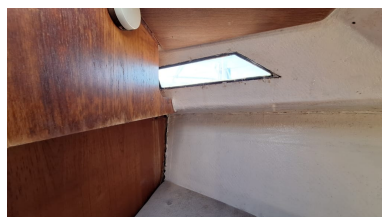
- Furling Genoa
- Winches
- Spreader Lines: 1

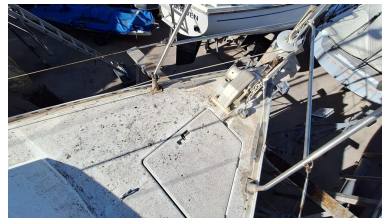
## Various Equipment

- Windlass

- Anchor with chain

## Photos





All data reflected in this sheet is offered with the best intentions, however, we will not be responsible for possible errors reflected in the text and we recommend an on-board inspection for verification. This document is not contractual.